

Case-Based Visual Complexity

Entangling Science and the Humanities as Method

Brian Castellani, PhD. FAcSS
Professor, Environmental and Public Health

Director, Research Methods Centre
Co-Director, Wolfson Research Institute
for Health & Wellbeing, Durham
University, United Kingdom

Visting Professor, Nelson Mandela
University, South Africa

Adjunct Professor of Psychiatry
Northeastern Ohio Medical University,
United States



BRIAN CASTELLANI
LASSE GERRITS



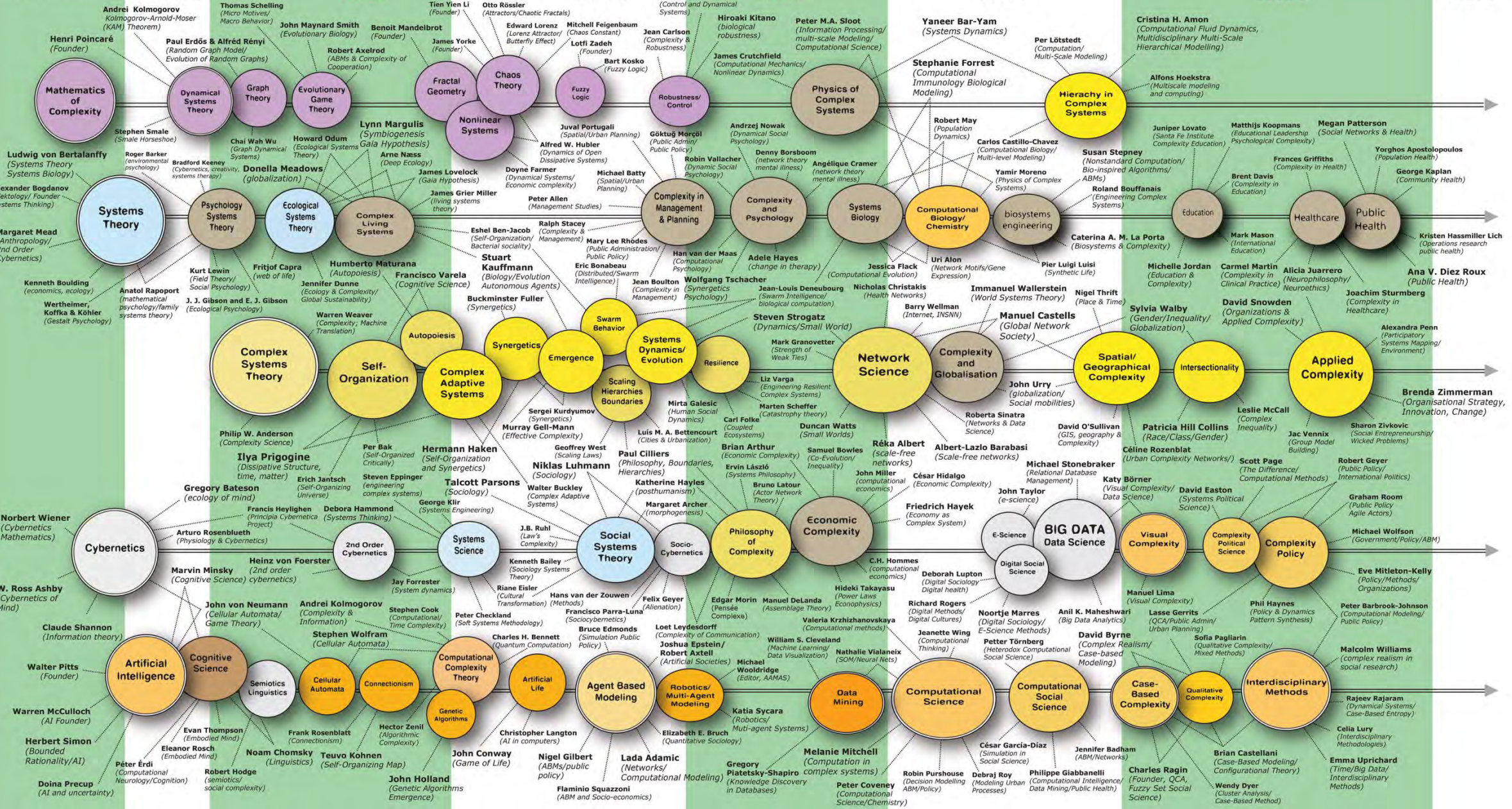
THE ATLAS OF SOCIAL COMPLEXITY



L'œil, comme un ballon bizarre se dirige vers L'INFINI

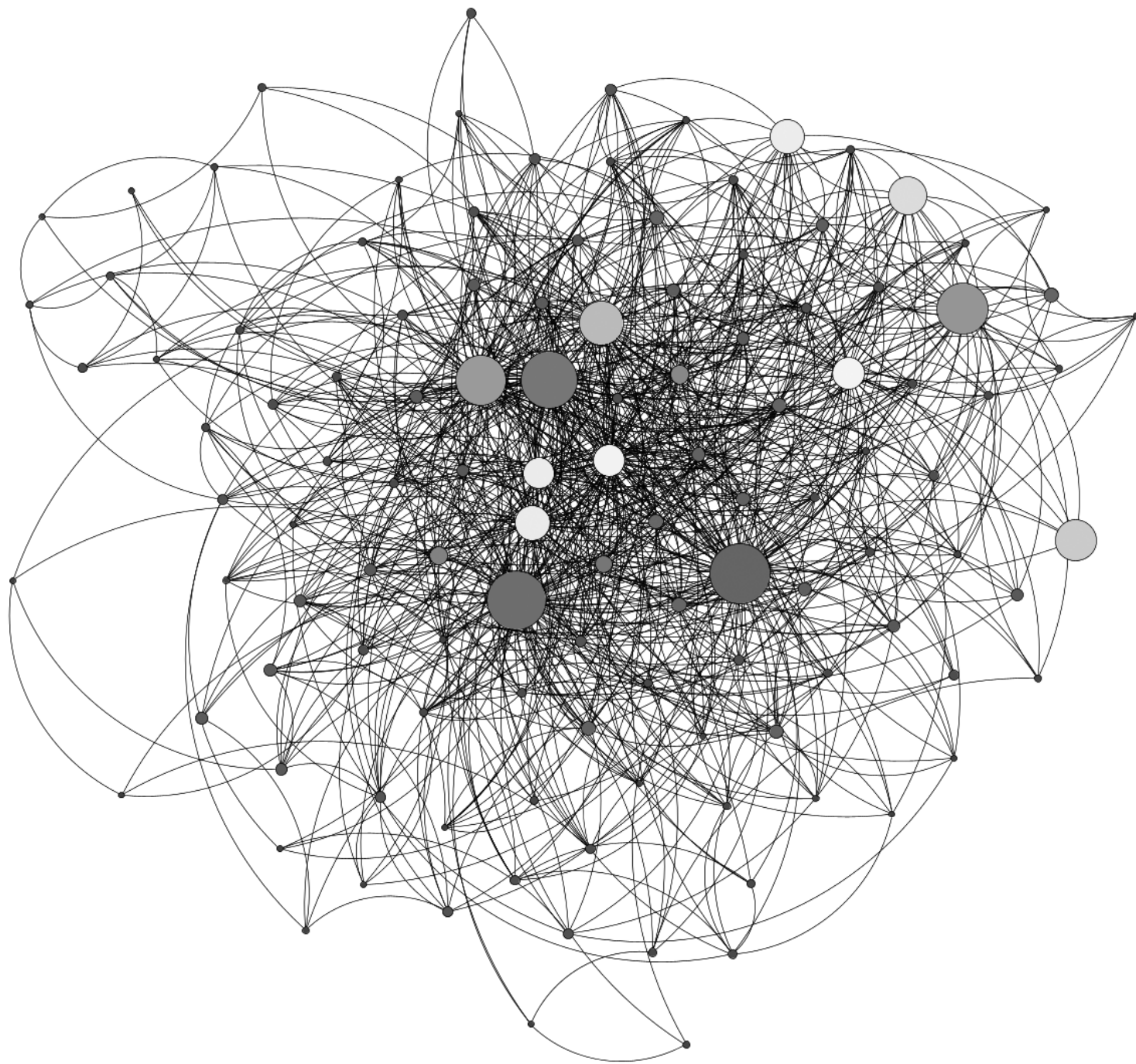


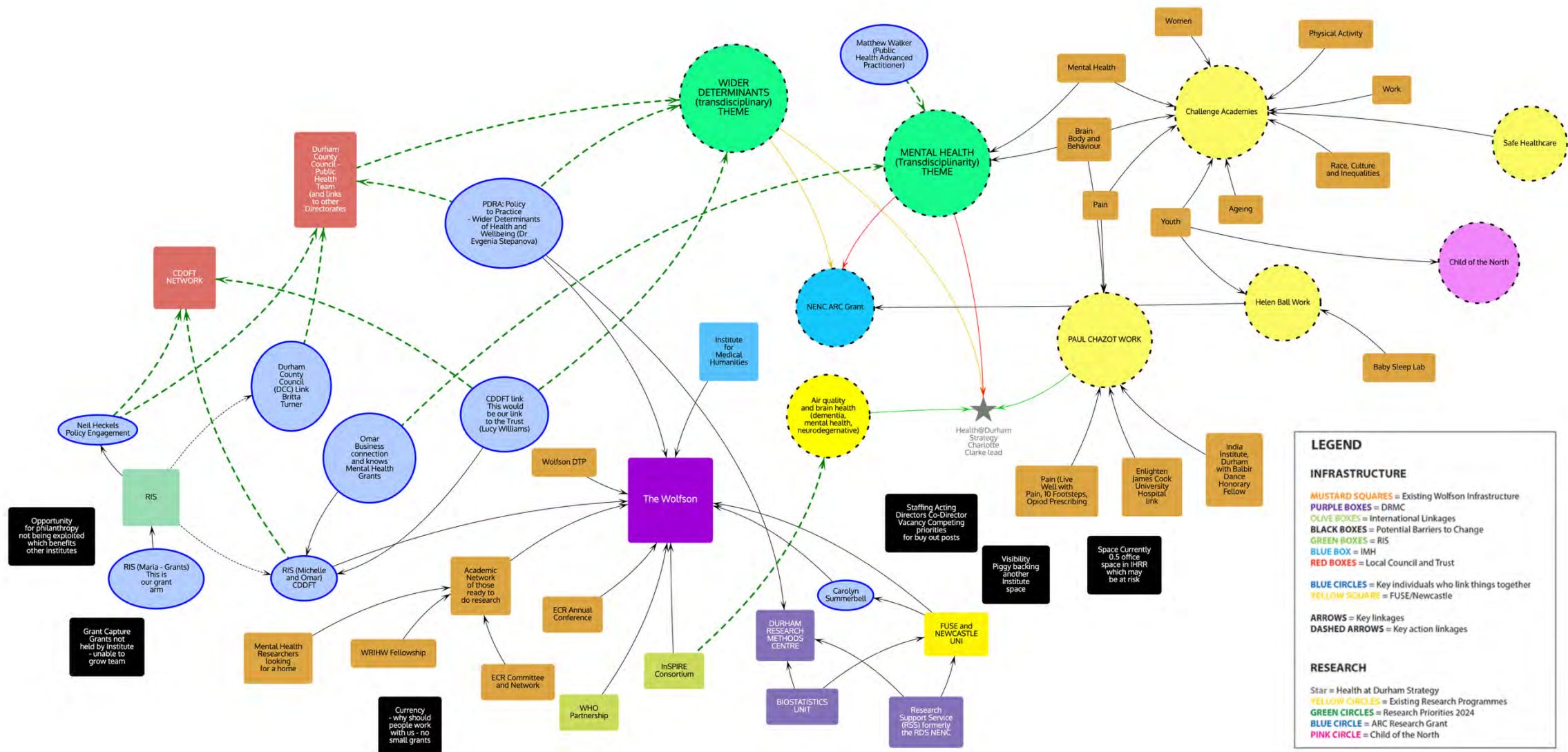
1940-1950's 1960's 1970's 1980's 1990's 2000's 2010's 2020's



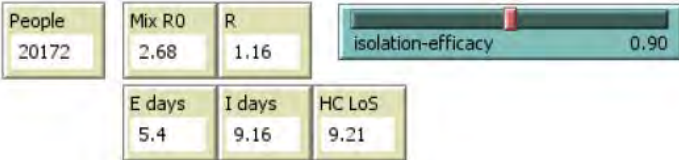
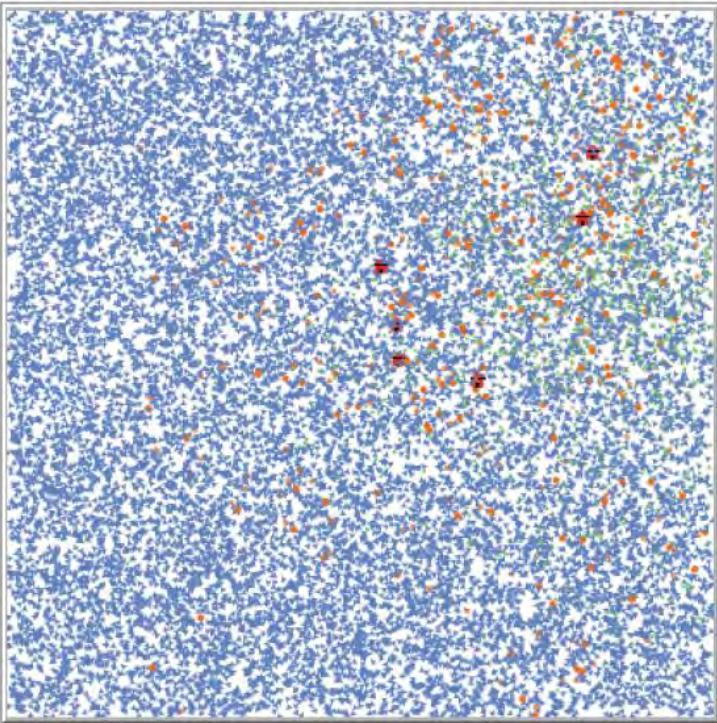
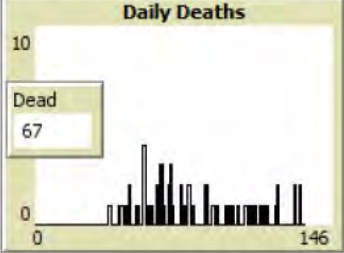
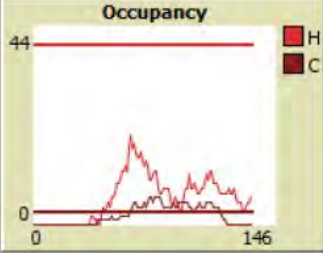
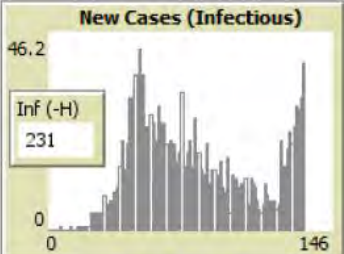
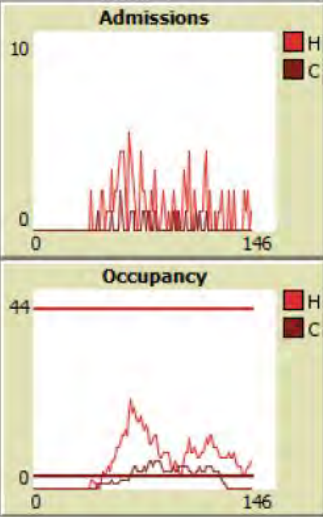
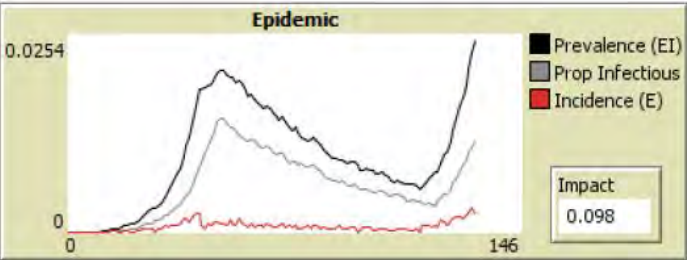
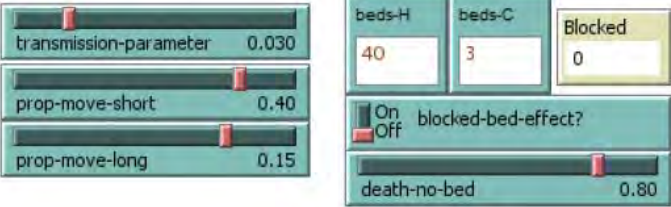
The Challenge

- The transdisciplinary nature of the complexity sciences reminds us that knowledge is entangled across disciplines, practices, and methods
- However, complexity science models, while powerful, create discipline-specific, visually flat outputs

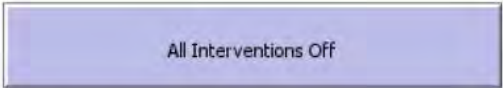




Epidemic Progression



Interventions



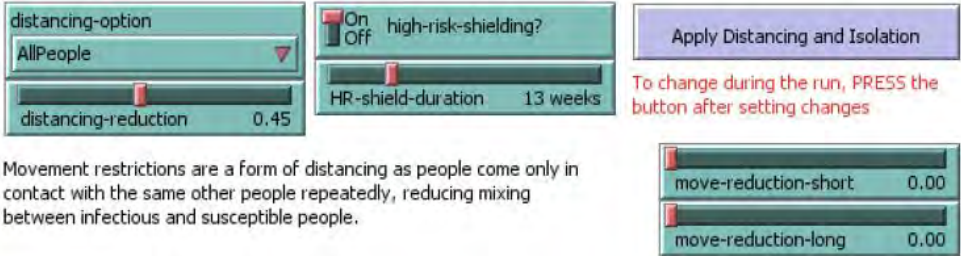
Social Distancing

Select what is meant by social distancing and how strongly the distancing works.

(1) ByContact: the probability of a transmitting contact is reduced by the specified proportion.

(2) AllPeople: everyone reduces their activity (attempted contacts) by the specified proportion.

(3) AllOrNone: the given proportion of people isolate (includes high risk if isolation also selected), but others make no reduction.



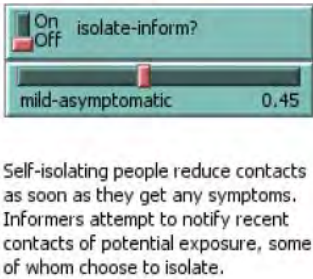
Movement restrictions are a form of distancing as people come only in contact with the same other people repeatedly, reducing mixing between infectious and susceptible people.

Social Distancing Timing

When does the social distancing policy start (and stop)?

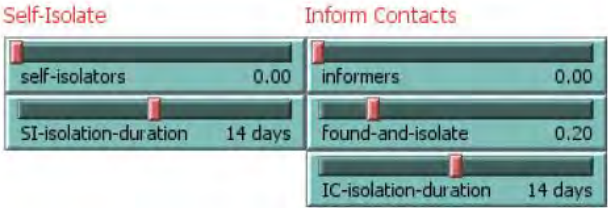


Response to Symptoms



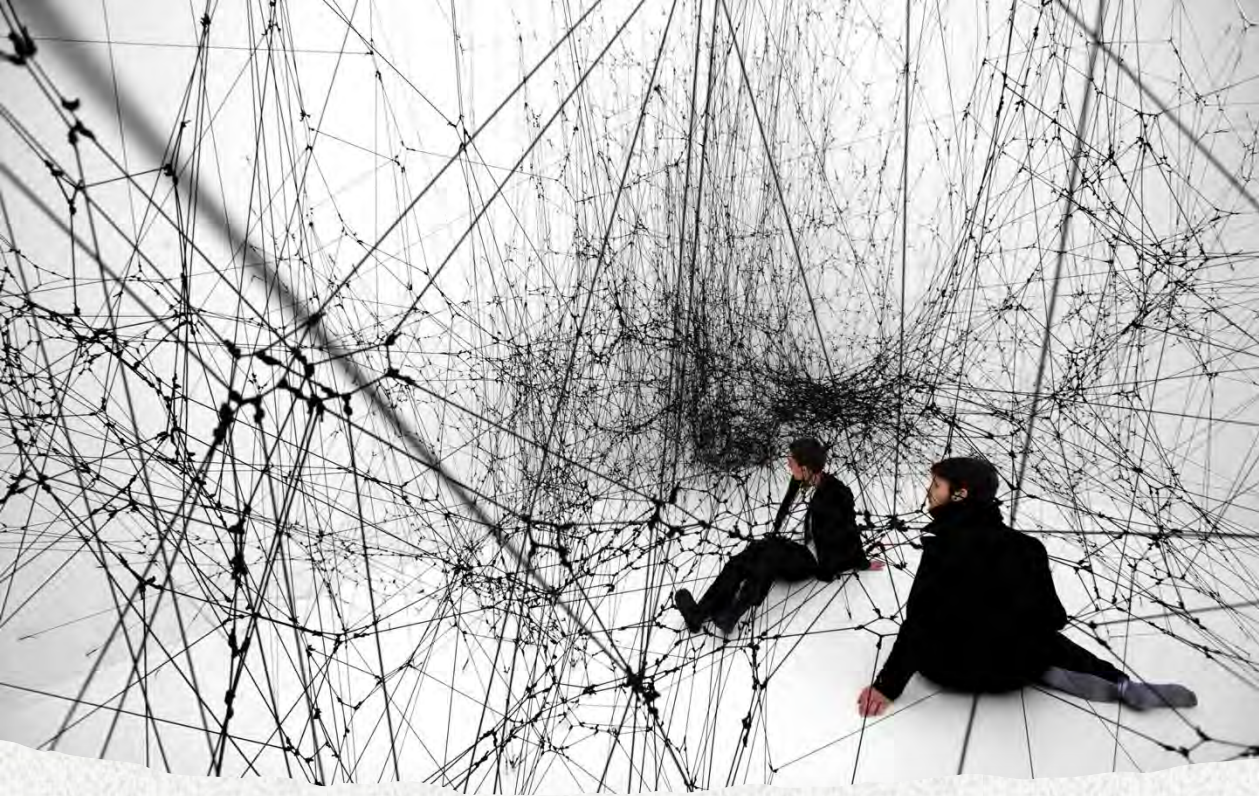
Self-isolation and informing contacts (if switched on) apply regardless of whether distancing interventions have been triggered.

Only some of mildly infected may show symptoms (plus all in hospital).



Response

- Case-Based Visual Complexity (CBVC): visual method → lived, embodied, conflicted, affective
- CBVC is part of the field of case-based complexity (CBC)
- CBVC is also situated within a wider field of artists-scientists addressing the tangled nature of knowledge and complexity



Artist–Scientist Networks

- Tomás Saraceno: webs, aerosolar structures
- Julie Mehretu: layered cartographies

Artist–Scientist Networks

- Neri Oxman: material ecology
- Chiharu Shiota: immersive webs, memory



Philosophical Foundations

- Complex Realism = middle ground (realism \leftrightarrow relativism)
- Social life is ontologically complex and systems
- Entanglement as ontologically real
- Avoids traps of naïve realism & relativism
- Visual practices as epistemology and method

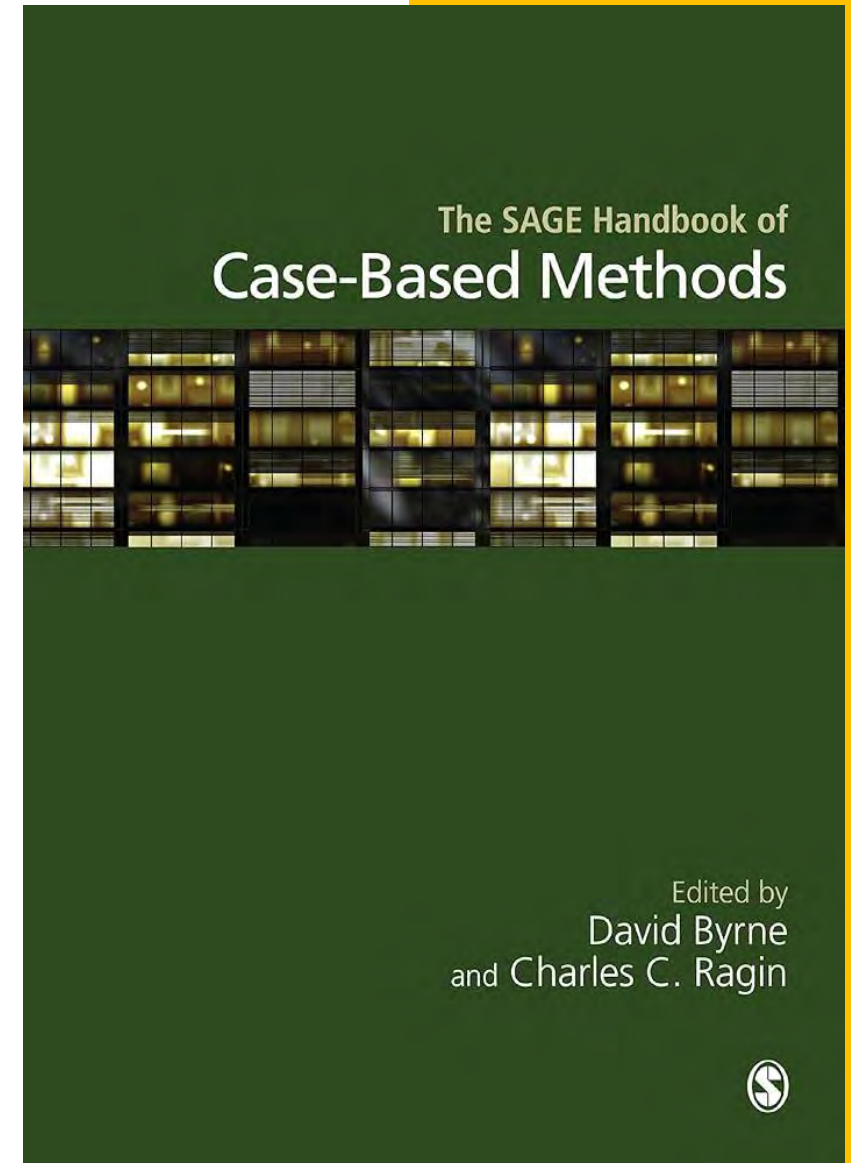
Case-Based Complexity

Case-based complexity is a suite of interdisciplinary methods first advanced by David Byrne and colleagues as an improvement on the conventions of cased-based qualitative configurational analysis (QCA).

Case-based complexity is an established field of study, particularly in sociology, policy studies, political science, governance, urban planning and public administration.

Case-based complexity is grounded on Byrne's novel insight that cases meet the definitional critique of complex systems.

An excellent introduction to this methodology is Byrne and Ragin's *Sage handbook of case-based methods*.



The Field of Case-Based Complexity

- QCA, TJ-QCA, CBDMM, Systems Mapping, COMPLEX-IT
- Cases not variables → configurational, systemic, entangled wholes
- Problem of flatness → schematic outputs
- Latour's 'flat networks' critique

The screenshot displays the COMPLEX-IT web application interface. At the top, a dark blue navigation bar contains the COMPLEX-IT logo, a home icon, and links for Home, Features, How It Works, Our Story, Team, Help Centre, and More. A user profile icon and 'Log In' link are on the right. The main header area features the text 'COMPLEX-IT' in large white letters. Below this, a section titled 'Run Online or Download for R-Studio' offers two options: 'WEB VERSION' and 'DOWNLOAD VERSION', each with a corresponding icon. A central panel on the right lists the application's workflow steps: 'Build Your Model' (with sub-steps 1-4), 'Confirm & Explore Your Model' (with sub-steps 3-4), 'Run Scenario Simulations' (with sub-steps 5-6), 'Run Data-forecasting/classification' (with sub-steps 6-7), 'Systems Mapping Tab' (with sub-steps 7-8), 'Export Your Results' (with sub-steps 8-9), and 'Help'. To the right of this panel, a 'Select the number of clusters' dropdown menu is set to '3', followed by a checkbox for 'Do you want to set a seed for reproducible results?'. Below these controls, a table displays data for three variables: 'Fuel.poverty', 'Social.Isolation', and 'Get.NHS.Health.check'. The table has four rows of data. Below the table, a code block shows R code: `(x = km@clusters, dist = dlistM)` and `3 clusters C1`. A small bar chart is visible to the left of the code. At the bottom right, a small table shows '1: 57 | 0.41' and '2: 22 | 0.41'.

Fuel.poverty	Social.Isolation	Get.NHS.Health.check
10.091	45.233	32.759
11.614	48.155	30.53
10.646	45.562	37.842
10.567	45.854	34.402

```
(x = km@clusters, dist = dlistM)
3 clusters C1
1: 57 | 0.41
2: 22 | 0.41
```

“Networks, Societies, Spheres: Reflections of an Actor-network Theorist”*

Keynote speech for the INTERNATIONAL SEMINAR ON NETWORK
THEORY: NETWORK MULTIDIMENSIONALITY IN THE DIGITAL AGE

19th February 2010

Annenberg School for Communication and Journalism
Los Angeles

Bruno Latour, Sciences Po

Case-Based Visual Complexity

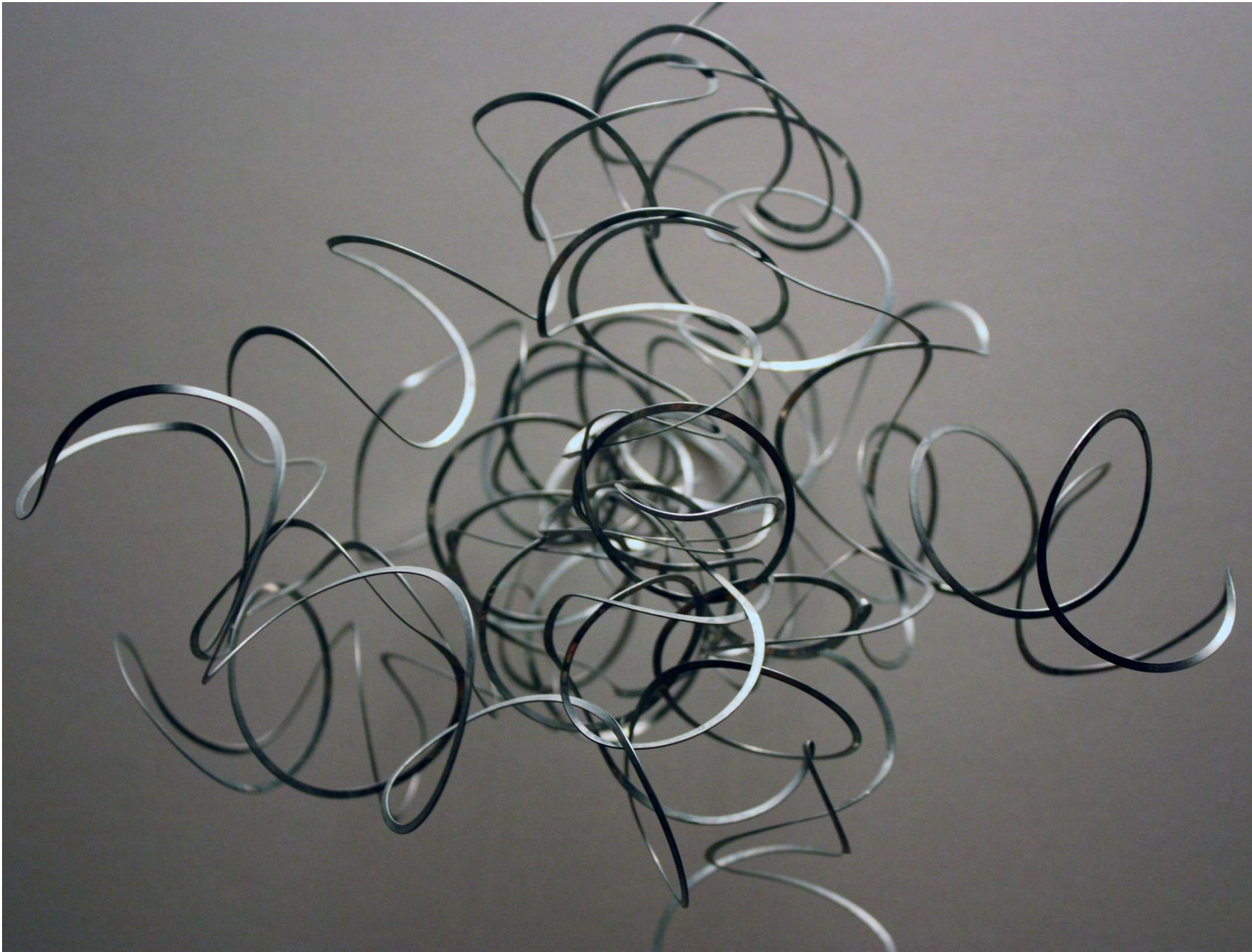
- Not illustration or 'making results visually compelling'
- Visual–epistemic practice in its own right
- **Aesthetics as method: perception, sensation, affect**
 - Psychological, emotional, existential, ecological grounding
 - Complementary to case-based complexity

Areas of visual research into entanglement

- Assemblage / Material Experiment (wire tangles, mixed media)
- Embodied Complexity (portraits, tangle faces)
- Comic & Critical (OneBigMob satire)
- Speculative Futures (Entangled film, Gallery Cluster, architectural tangles)



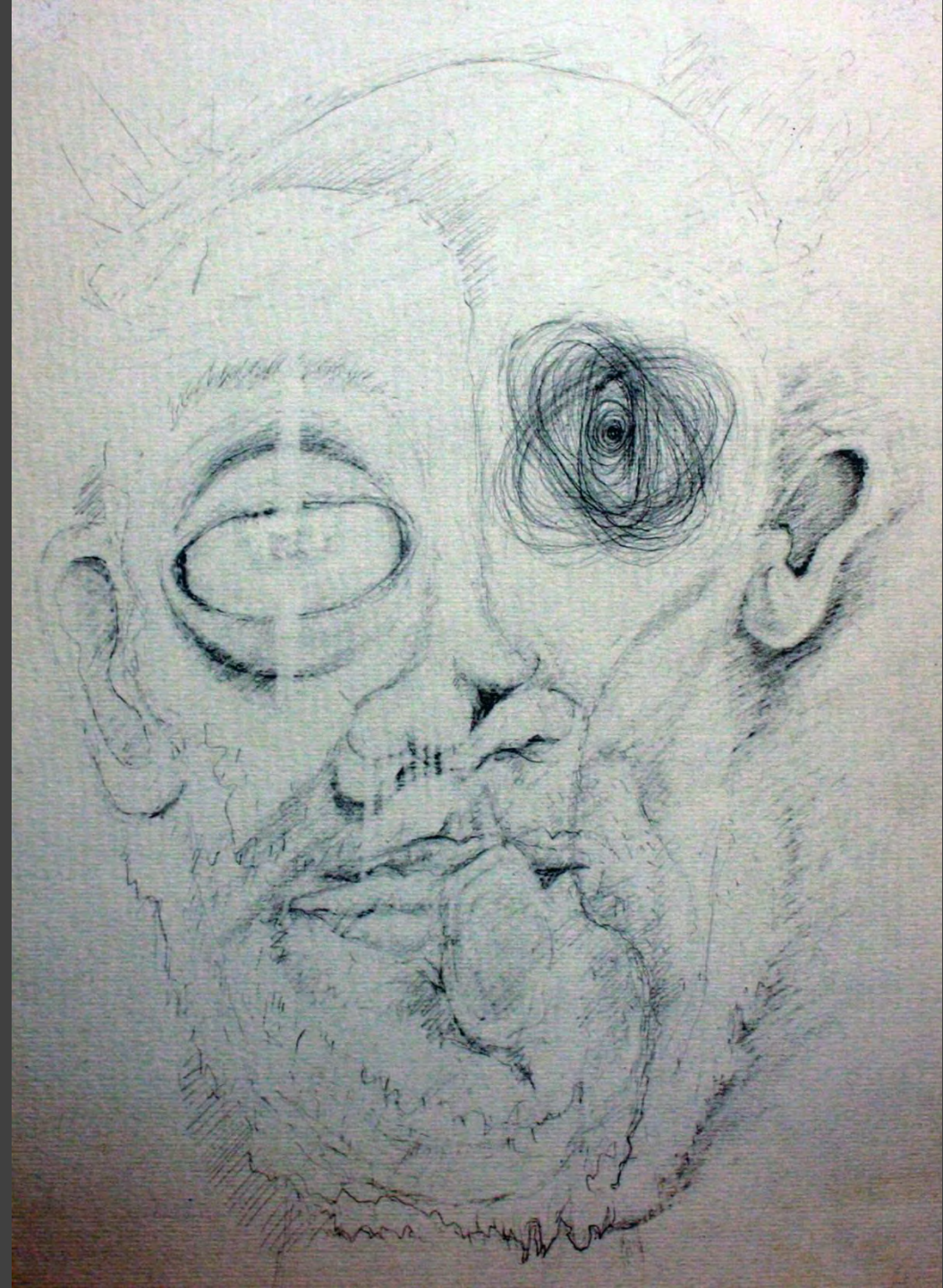
Entanglement



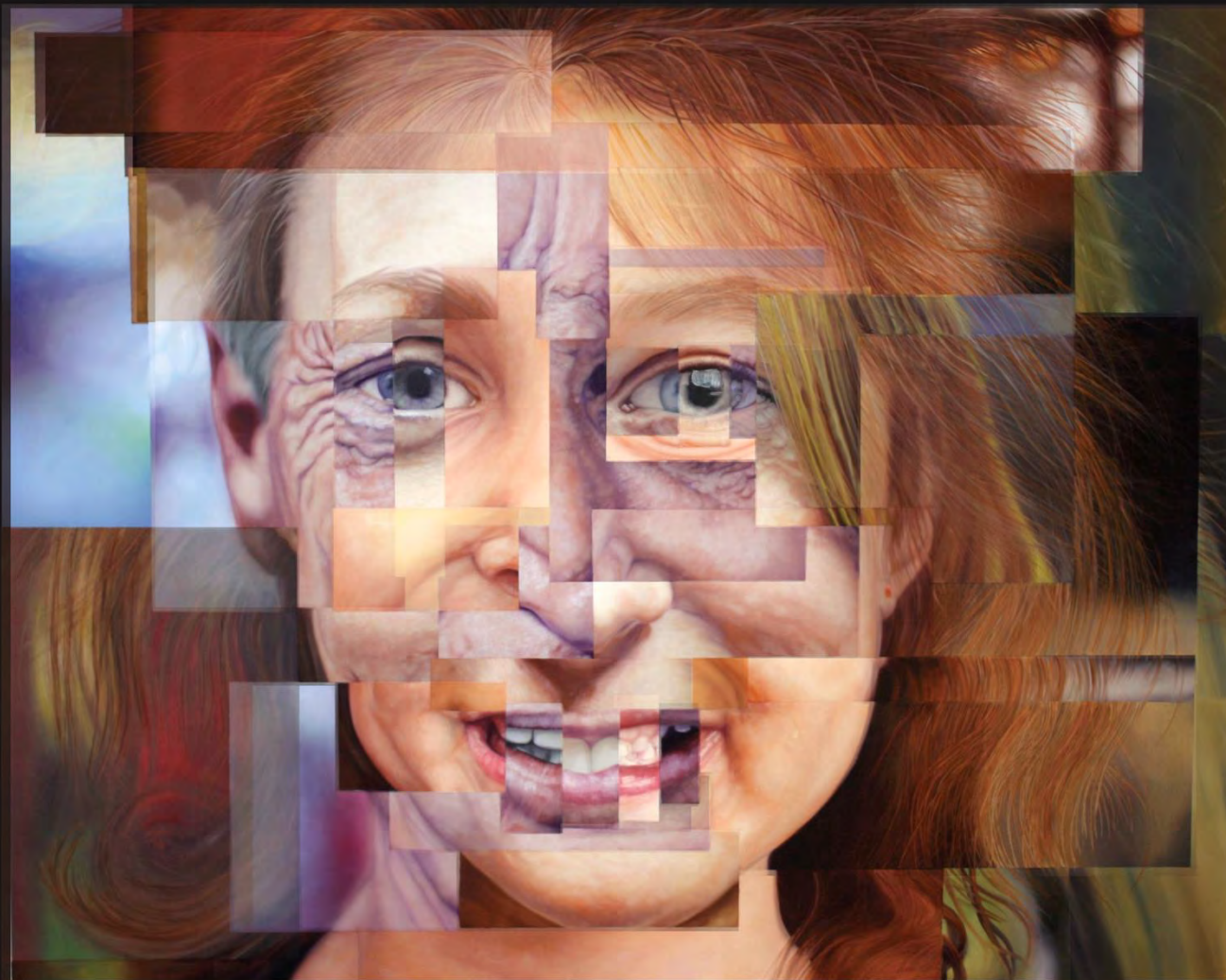


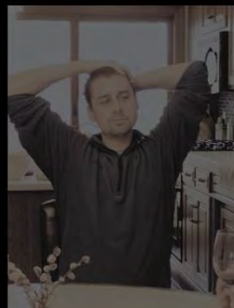














\$1.95

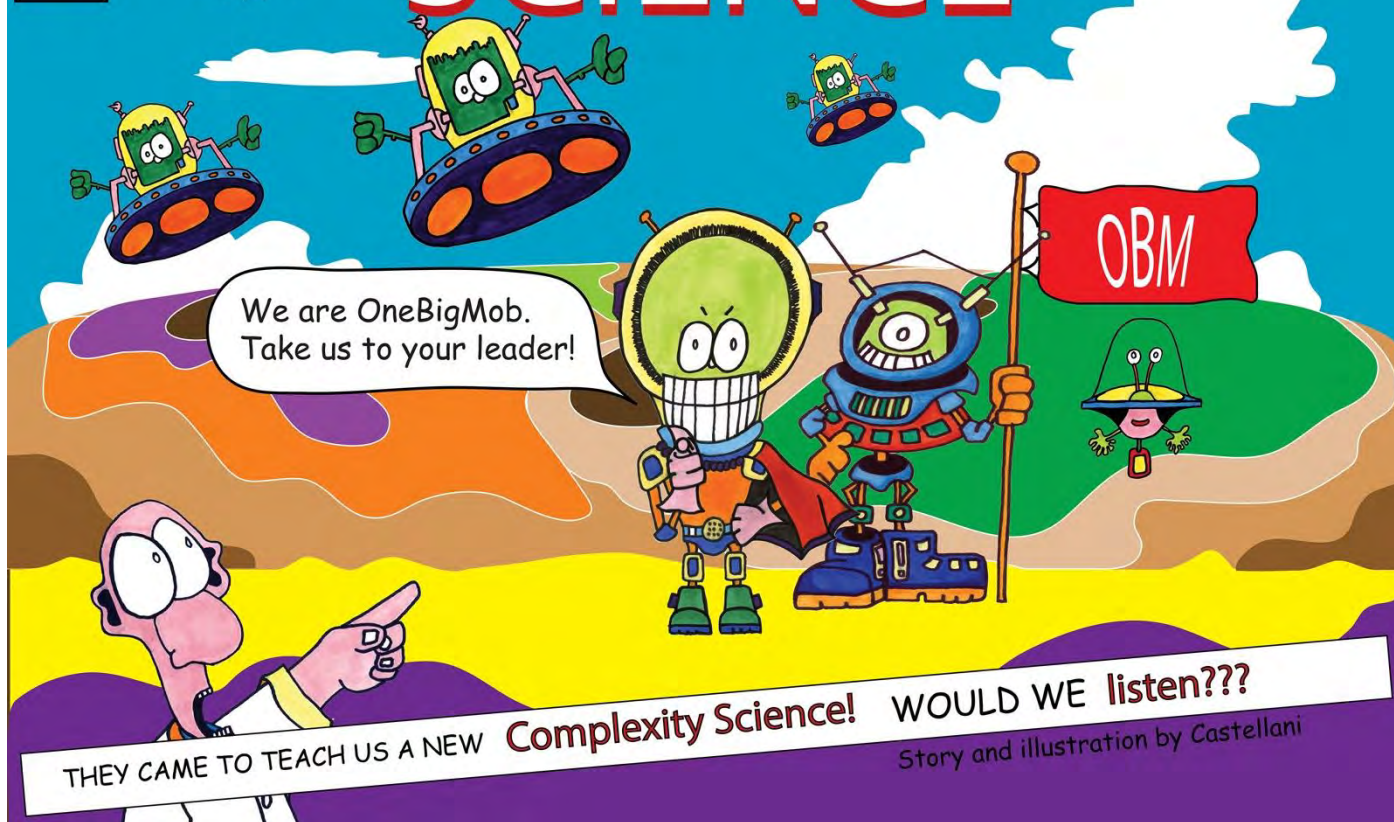
(Pub

1966)



MIND-BENDING COMPLEXITY SCIENCE FICTION!

One Big Mob SCIENCE



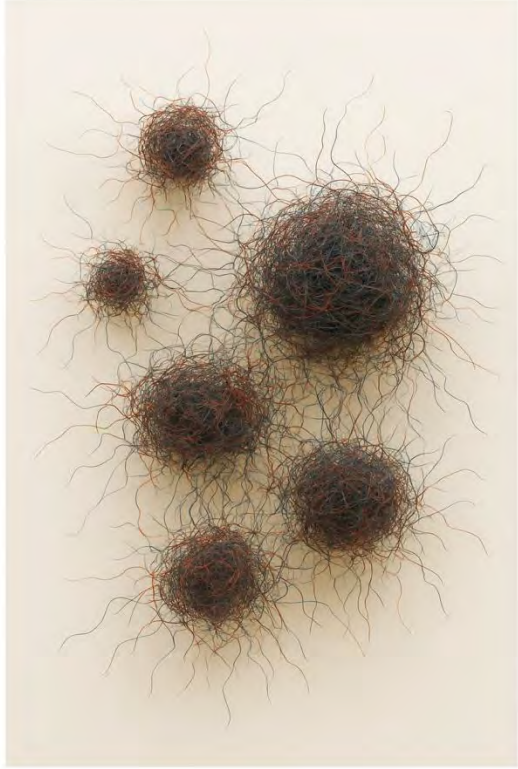
THEY CAME TO TEACH US A NEW Complexity Science! WOULD WE listen???

Story and illustration by Castellani





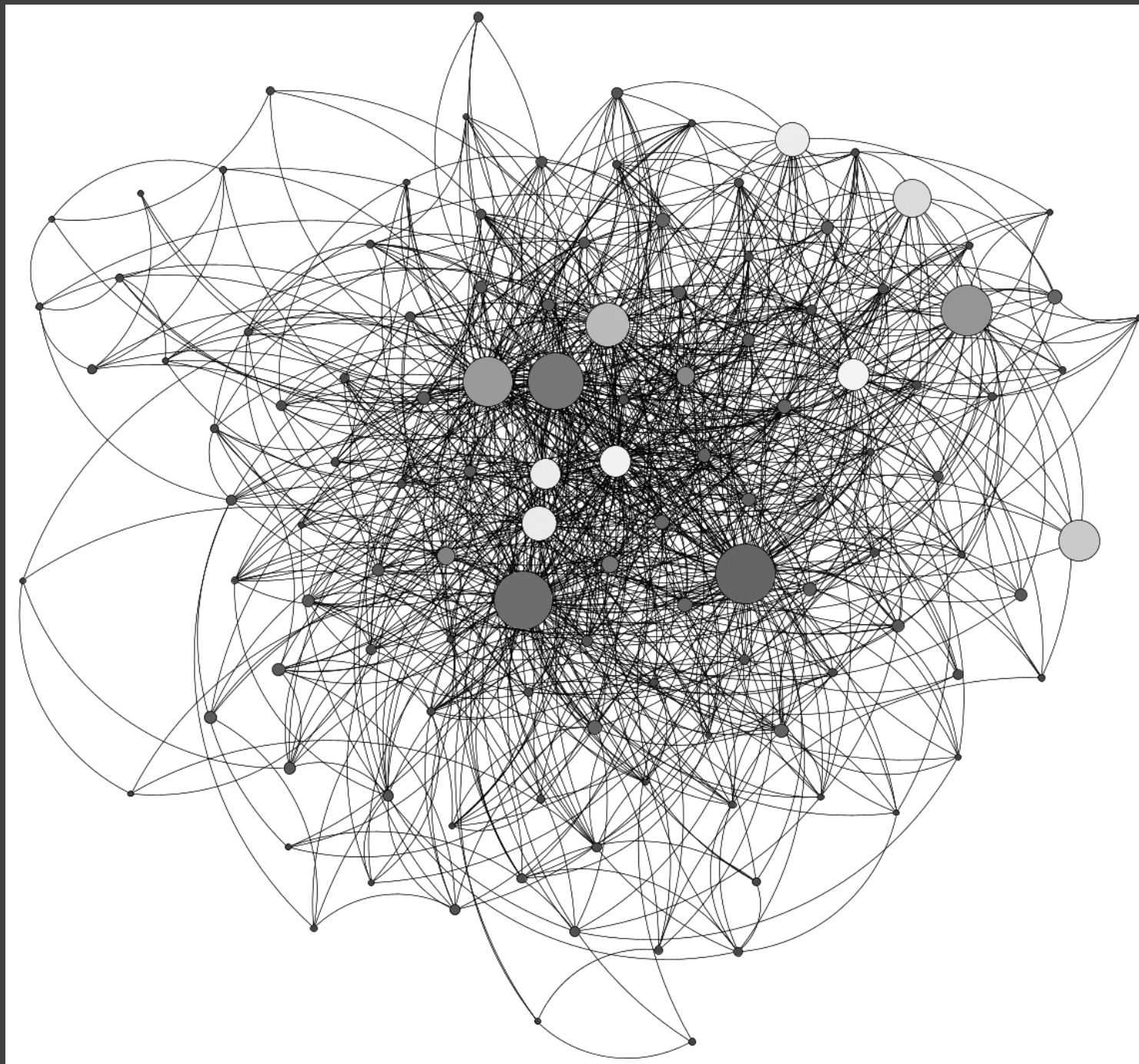


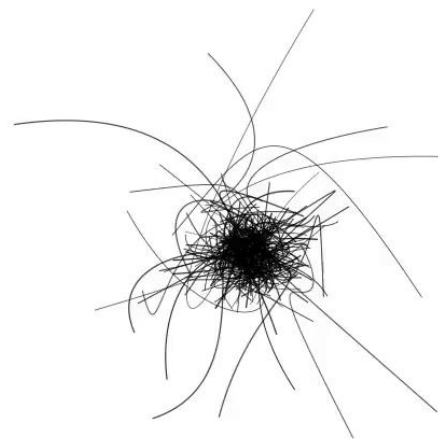


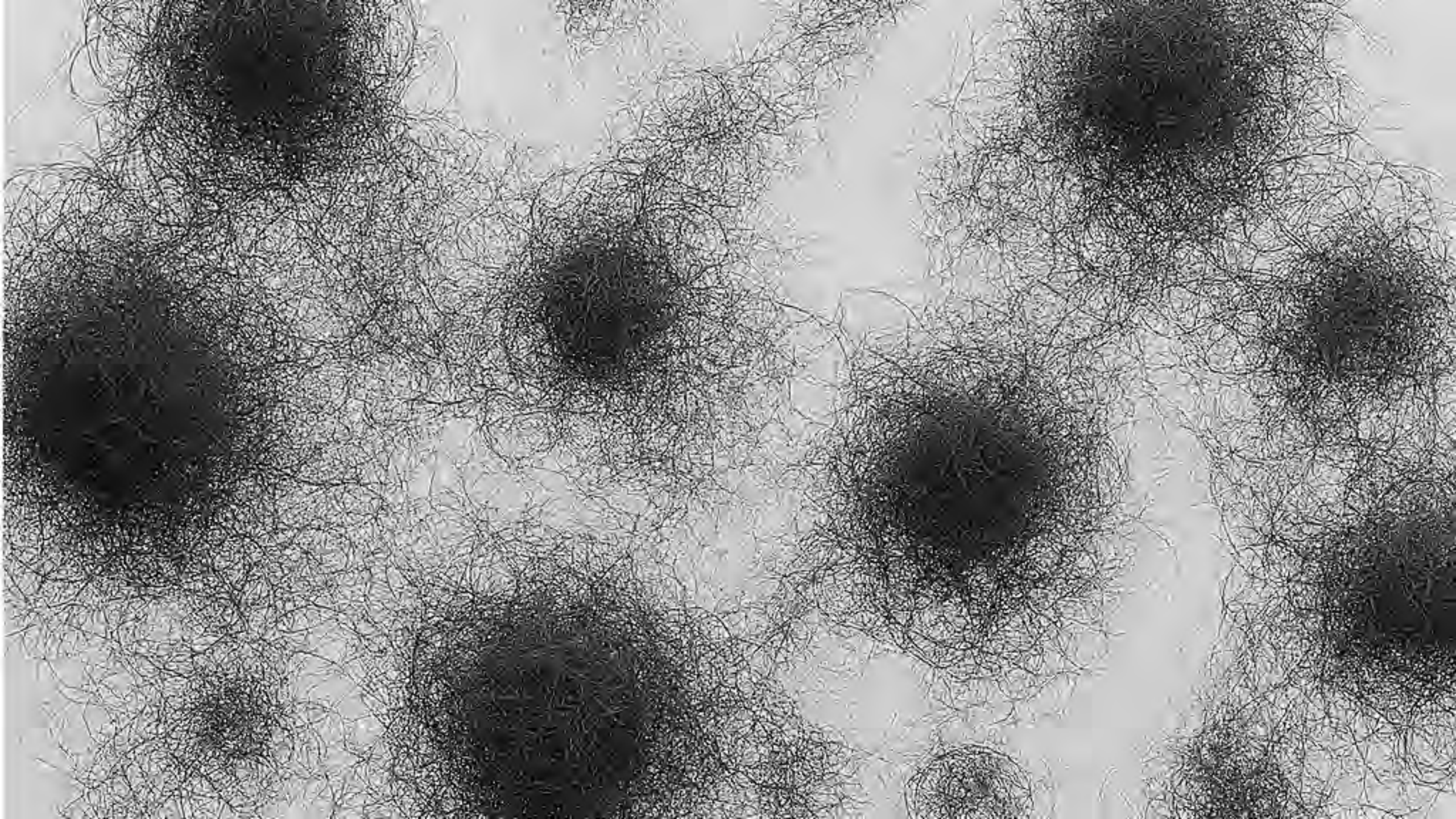


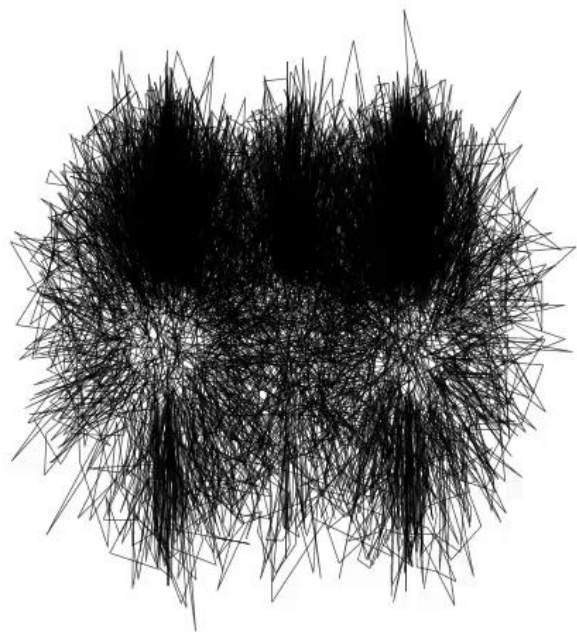


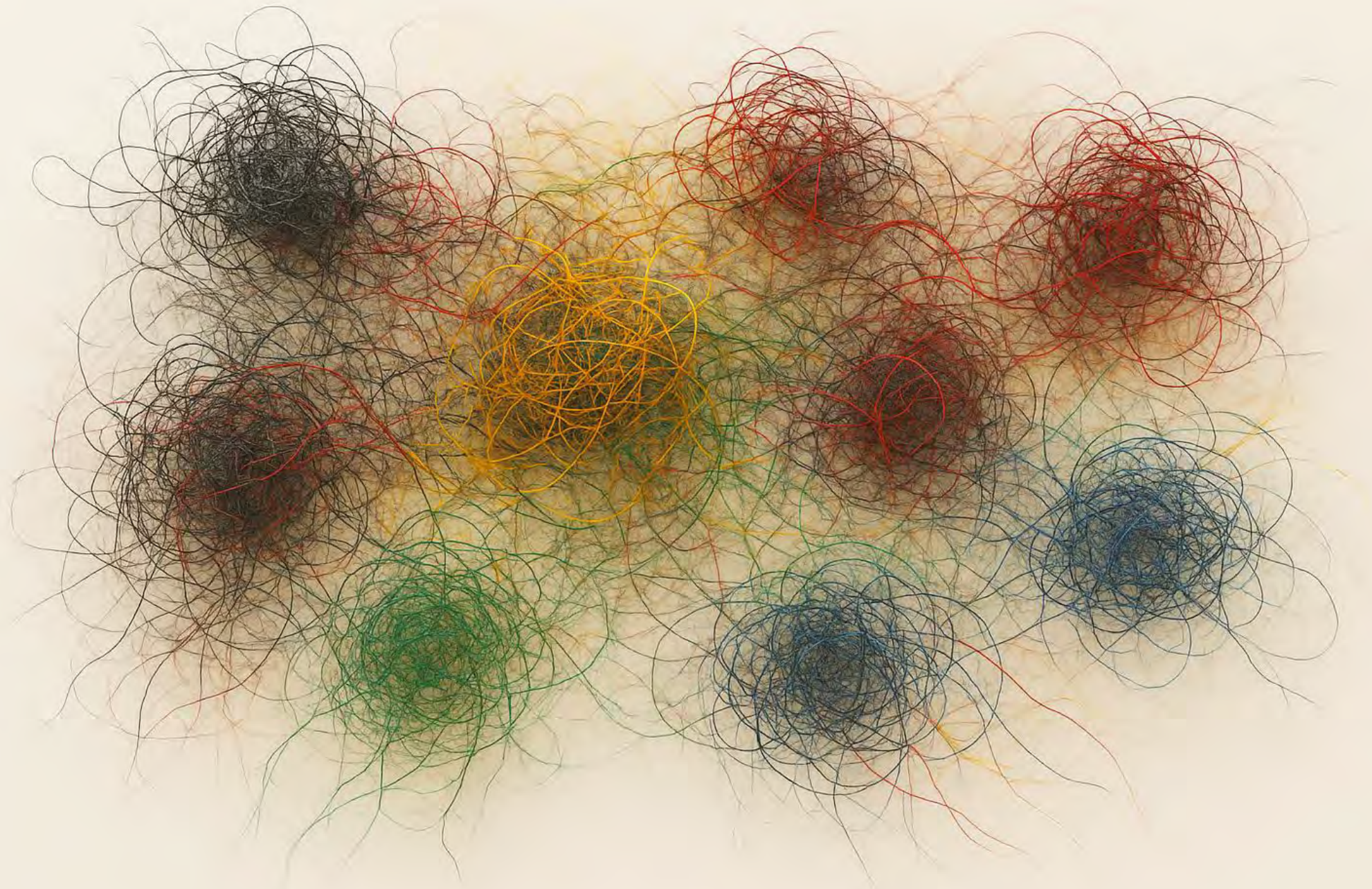


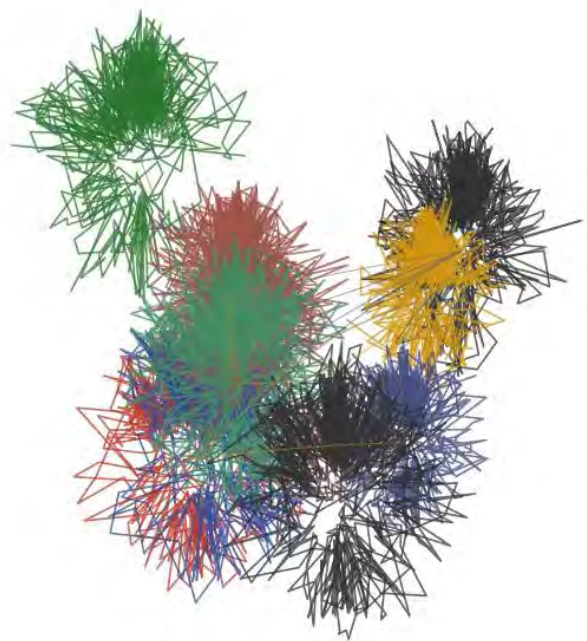












Political & Ethical Stakes

- Representation = power (Foucault)
- Flatness → analytic shortcoming & political risk
- CBVC restores conflict, inequality, embodiment
- Grounds complexity science in the humanities
- Helps to cultivate ethical imagination

Conclusion

- Sciences + humanities need not be separate
- CBVC complements CBC: analytic clarity + lived resonance
- Families of practice illustrate entanglement
- Political & ethical stakes: why representation matters
- Hybrid, participatory, pedagogical, policy uses